

# Broughs Road extension

PROJECT UPDATE

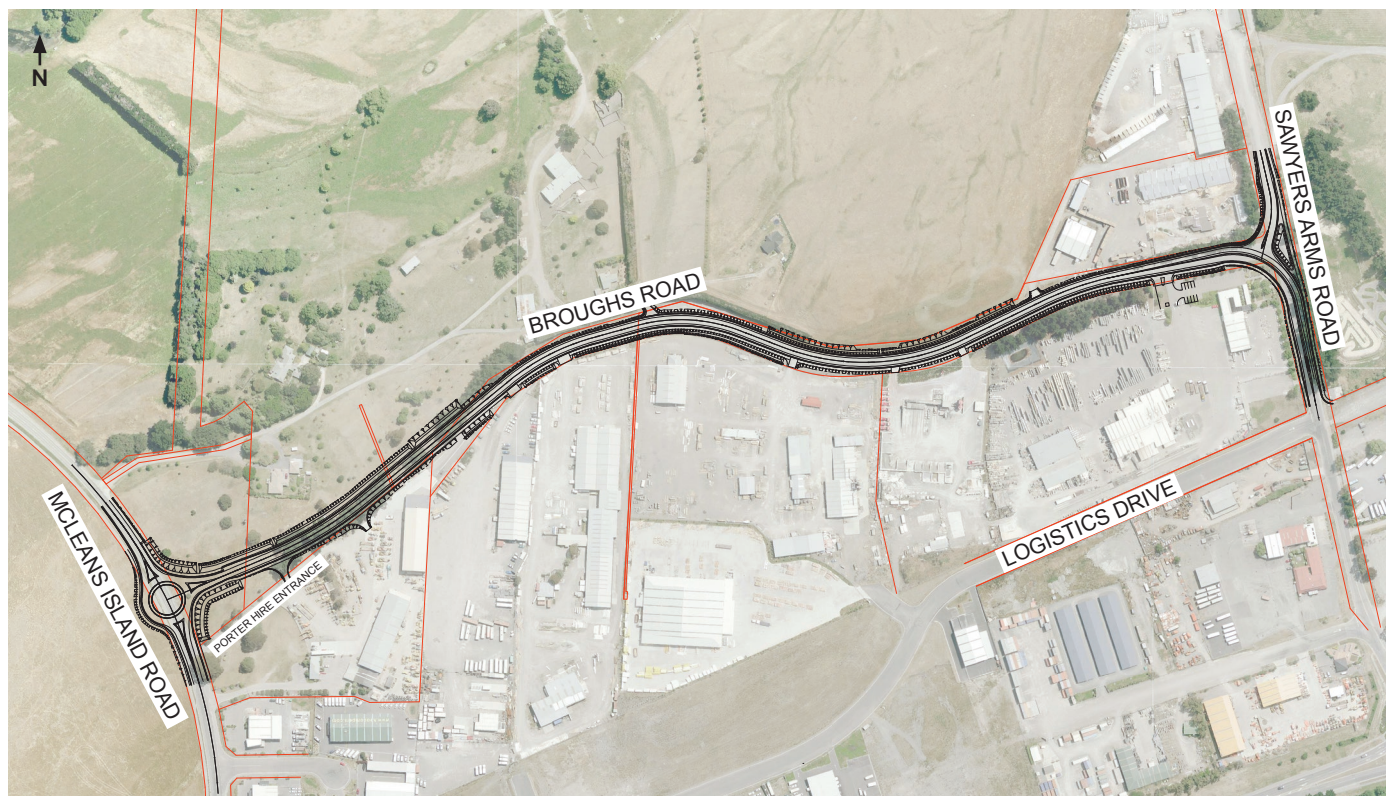
January 2018

## PROJECT OVERVIEW

The NZ Transport Agency will extend Broughs Road through to McLeans Island Road, improving the transport links between Sawyers Arms road and McLeans Island Road, and improving journey times and safety. Fulton Hogan has been contracted to carry out the work.

The project will include installing a roundabout at the new intersection of McLeans Island Road and Broughs Road, upgrading the existing Broughs Road, stormwater improvements, and adding a footpath and cycle lane. The intersection at Sawyers Arms Road will change, with traffic heading to the south on Sawyers Arms Road giving way to Broughs Road traffic.

This project is expected to be completed by late 2018.



### MANAGING TRAFFIC

Stop/go traffic management will be in place on both McLeans Island Road and Broughs Road during drainage works and construction of the roundabout.

Some of this work will be completed at night.

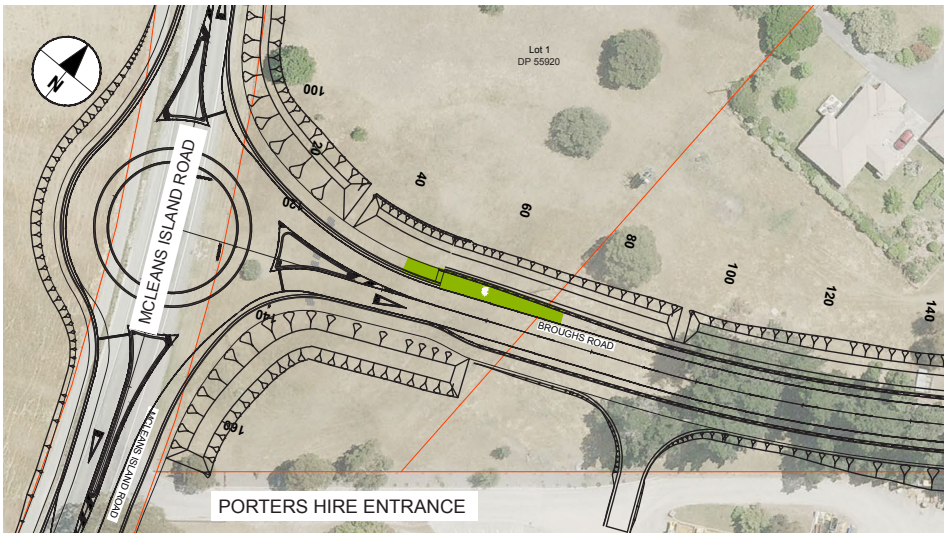
### WHAT WORK IS UPCOMING?

Fulton Hogan has started preliminary clearance work for the roundabout at the western end of the project on McLeans Island Road. Work at this end is expected to continue until May.

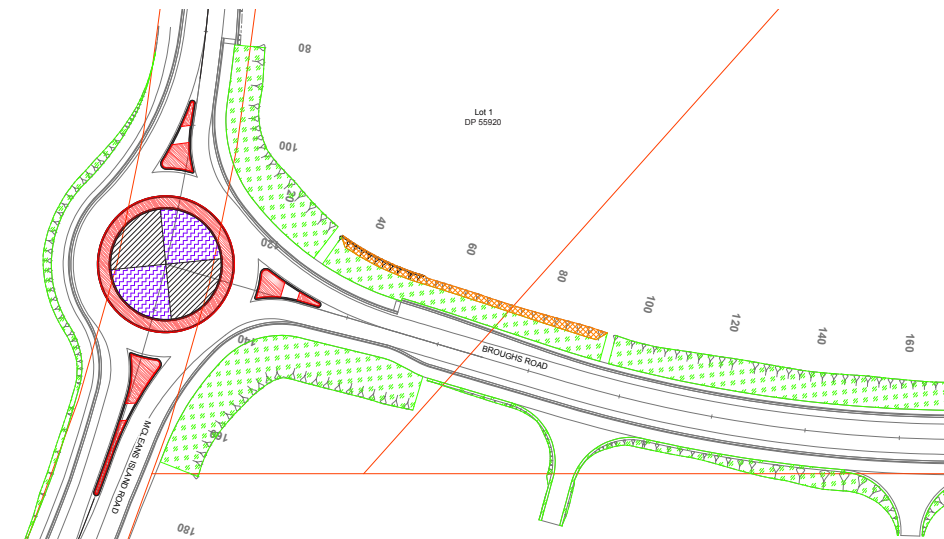




Current view of McLeans Island Road.



Design of the new roundabout



New roundabout landscaping design

### PROJECT BENEFITS

- Improved connection between local roads
- Improved journey times
- Improved safety
- Reduced driver frustration

### HOURS OF WORK

Most work will take place from Monday to Saturday, 7am to 6pm.

To reduce the impact on businesses and traffic along McLeans Island Road, some work will take place at night between 7pm and 7am. We will notify residents prior to this work starting. Measures will be in place to minimise noise, dust and vibration levels.

All works are weather dependent.

### CAN WE HELP?

Please contact Fulton Hogan on **0800 275 342** to discuss any specific access needs such as nurse/doctor visits or Meals on Wheels deliveries to your property.



Keeping you informed is important to us. You can follow us on:

[nztasouthisland](#)

[nztacwc](#)

[www.nzta.govt.nz](http://www.nzta.govt.nz)